

Nicholson Heritage Association News

WELCOME CORNER!

Dear Friends:

Thank you! With your votes and support, we were able to place 112th out of 302 projects in the *Pepsi Refresh Project* in January. We will apply again in April and if we get selected, we'll need your votes!

This year, we celebrate Nicholson Post Office's 200th year and we hope to finalize the railroad station purchase.



Finally, the Nicholson Bridge graces the cover of the 2011 Pennsylvania Vacation Guide, which provides the best of Pennsylvania. Get your free copy at: <http://www.visitpa.com/pa-vacation-guide>.

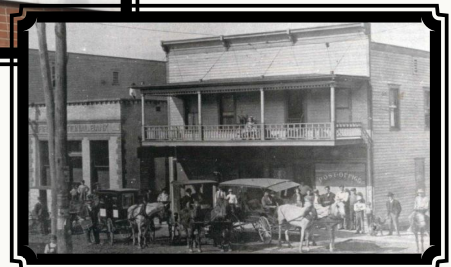
Thank you for your continued support!

- Marion Sweet, Chair



Nicholson Post Office Present Day

Nicholson Post Office
Corner of Main
& Walnut Streets



NICHOLSON POST OFFICE TURNS 200 YEARS OLD

In 1811, the first post office, called Thornbottom in Nicholson Township, was established in the area about a mile south from the west end of town. The post office was in a store run by Caleb Roberts, who was also postmaster. In 1825, the post office moved to Bacon's Tavern at the west end of Route 92 in present day Nicholson. When Nathan Bacon became postmaster, he changed the name of the settlement to Baconville (also later referred to as Bacontown). In 1855, the post office was moved again to the Delaware, Lackawanna and Western Railroad station in town, still located off Route 11, and the name was changed to Nicholson.

On October 20, 1882, the post office was moved to the corner of Main and Walnut Streets. In 1923, Bert Stephens did considerable renovation of the building. Before moving to it's current location in 1961 at 55 Main Street, the post office moved right next door to Lochen's Market on Main Street.

To celebrate the establishment of a post office in Nicholson, we are working with the United States Postal Service (USPS) to provide a First Day Cancellation around this years Bridge Day celebration in September. Also, we hope to recognize this milestone at a ceremony during Bridge Day.

The USPS maintains a list of postmasters at: <http://www.usps.com/postmasterfinder>, which has most postmasters appointed after 1986 and some postmasters appointed before 1986.

Following is a list of Nicholson postmasters from the site:

<u>Name</u>	<u>Title</u>	<u>Date Appointed</u>
Nathan Bacon	Postmaster	01/04/1828
John N. Woodruff	Postmaster	12/12/1849
James S. Garwood	Postmaster	02/06/1852
Albert D. King	Postmaster	05/02/1854
Lemuel Harding Jr.	Postmaster	11/09/1857
Albert D. King	Postmaster	07/10/1861
Edward F. Snow	Postmaster	06/22/1865
Henry L. Harding	Postmaster	11/09/1866
Isaac S. Little	Postmaster	03/23/1869
R. D. Newton	Postmaster	10/22/1872
Charles B. Williams	Postmaster	03/07/1882
Adelbert W. Stephens	Postmaster	09/08/1885
Jerome Lord	Postmaster	05/18/1889
Frank P. Stephens	Postmaster	01/09/1892
Nathan P. Wilcox	Postmaster	05/10/1894
Fred M. Williams	Postmaster	09/23/1897
Francis N. Boyle	Postmaster	04/10/1909
Edward Ace	Postmaster	01/19/1914
Bert D. Stephens	Acting Postmaster	08/01/1923
Bert D. Stephens	Postmaster	01/08/1924
Layton A. Wallace	Acting Postmaster	03/16/1936
Layton A. Wallace	Postmaster	06/25/1936
Hugh R. Saxton	Acting Postmaster	05/31/1956
Hugh R. Saxton	Postmaster	08/06/1957
Nelson C. Stull	Officer-In-Charge	06/22/1977
Bonnie L. Griffis	Officer-In-Charge	10/21/1977
Robert G. Downer	Postmaster	01/28/1978
Leland A. Coy	Officer-In-Charge	11/03/1988
Stephen E. Spencer	Officer-In-Charge	02/03/1989
Robert W. Richards	Officer-In-Charge	04/24/1989
Georgina E. Walters	Postmaster	06/03/1989

DL & W RAILROAD STATION UPDATE

The Nicholson Heritage Association would like to thank everyone who voted in January for our *Pepsi Refresh Project* grant submission to renovate and restore the historic 1849 railroad station in Nicholson into a community center. The railroad station was built by the Liggett's Gap Railroad, one of the Delaware, Lackawanna and Western Railroad's (DL&W) predecessors.



Station – 2010

our first attempt!

Although we did not get enough votes to rank first or second place to win the \$250,000 grant, we did end up ranked 112 out of 302 projects. With your help and votes, we were able to achieve this rank, considering this was

The *Pepsi Refresh Project* starts back up April 4th and we will try for another grant then. If our project is selected through a lottery system, voting would begin in May and last throughout the month.

The 2011 *Pepsi Refresh Project* will fund projects voted on by the public for eight monthly cycles. Although Pepsi no longer has the \$250,000 grant amount, it did increase the number of grants for each grant amount of \$5,000, \$10,000, \$25,000, and \$50,000. More information is available at: <http://www.refresheverything.com/how-it-works>.

Finally, thank you to those who have already donated to our initiative. We look forward to forging ahead with purchasing, renovating, and restoring the historic railroad station into a community center.

VIADUCT VALLEY WAY SCENIC BYWAY UPDATE

The *Nicholson Heritage Association* has partnered with the *Endless Mountains Heritage Region (EMHR)* and the *Susquehanna Community Development Association* move the Viaduct Valley Way Scenic Byway forward. We are working together to identify stakeholders, initiate a fundraising strategy, and lay the groundwork for the development of a corridor management plan for the realization of the heritage tourism and economic opportunity possibilities associated with the scenic byway in Wyoming and Susquehanna Counties.

A letter to potential stakeholders and contributors was recently mailed. Individuals, business owners, and organizations who are interested in providing financial and/or volunteer support of the Viaduct Valley Way Scenic Byway are encouraged to

complete the pledge of support form available on our Web site page listed below and mail it to the *EMHR*. Those interested in making an immediate tax-deductible contribution may send a check payable to *EMHR* and specify "Byway Fund."

The Viaduct Valley Way Scenic Byway is vital to the economic stability of Nicholson and the region. By promoting tourism, the byway highlights the natural and man-made beauty of the Endless Mountains to attract visitors. From the breathtaking views of Fall Foliage to the imposing grandeur of the Nicholson Bridge in Nicholson and the Starrucca Viaduct in Lanesboro, there is plenty to see and do along this Route of the Famous Viaducts! Updates will be posted on our site: http://www.nicholsonheritage.org/index.php?p=1_7_Scenic-Byway.

Nicholson Heritage Association
P.O. Box 496
Nicholson, PA 18446
570-871-0510

Marion Sweet – Chair
George Barbolish – Vice Chair
Richard Lochen, Jr. – Treasurer
Joan Irion Jenkins – Secretary
Josh Stull – Editor/Webmaster

www.nicholsonheritage.org



Follow us on
twitter
<http://twitter.com/nicholsonheritage>

BRIDGE STAMP UPDATE

It's been one year since we received a reply from the Citizens' Stamp Advisory Committee (CSAC) stating that they had determined that the 100th anniversary of the Nicholson Bridge is not eligible to be a commemorative stamp.

As the CSAC recommended that we resubmit the proposal after one year, we recently submitted a letter requesting a commemorative stamp be issued for the 100th anniversary of the Nicholson Bridge. Updates

will be posted on the following page:
http://www.nicholsonheritage.org/index.php?p=1_6_Bridge-Stamp.

We urge all supporters to continue to submit letters of support either to us at our mailing address or the Citizens' Stamp Advisory Committee directly at:

c/o Stamp Development
U.S. Postal Service
1735 North Lynn St., Suite 5013
Arlington, VA 22209-6432

Stay Up To Date By Visiting Our Web Site & Signing Up for Our E-News at: www.nicholsonheritage.org.